

# SUBDIVISION PLAN OF PART OF LOT 2, PLAN 6585 AND CLOSED ROAD, PLAN EPP90642, BOTH OF SECTION 15, TOWNSHIP 26, OSOYOOS DIVISION YALE DISTRICT

PLAN EPP90643

PURSUANT TO SECTION 67 OF THE LAND TITLE ACT

BCGS 82E.083



The intended plot size of this plan is 560mm in width by 432mm in height (C size) when plotted at a scale of 1:1250

( All distances are in metres )

### LEGEND

- Denotes Standard Iron post (Type 5) found
- Denotes Standard Iron post (Type 5) placed
- ⊙ Denotes Control Monument found
- PT Denotes part of
- Wt Denotes witness

Note: This plan shows one or more witness posts which are not set on the true corner(s).

Integrated Survey Area No. 4, City of Kelowna, NAD83 (CSRS) 4.0.0.BC.1

Grid bearings are derived from GNSS observations and are referred to the central meridian of UTM Zone 11.

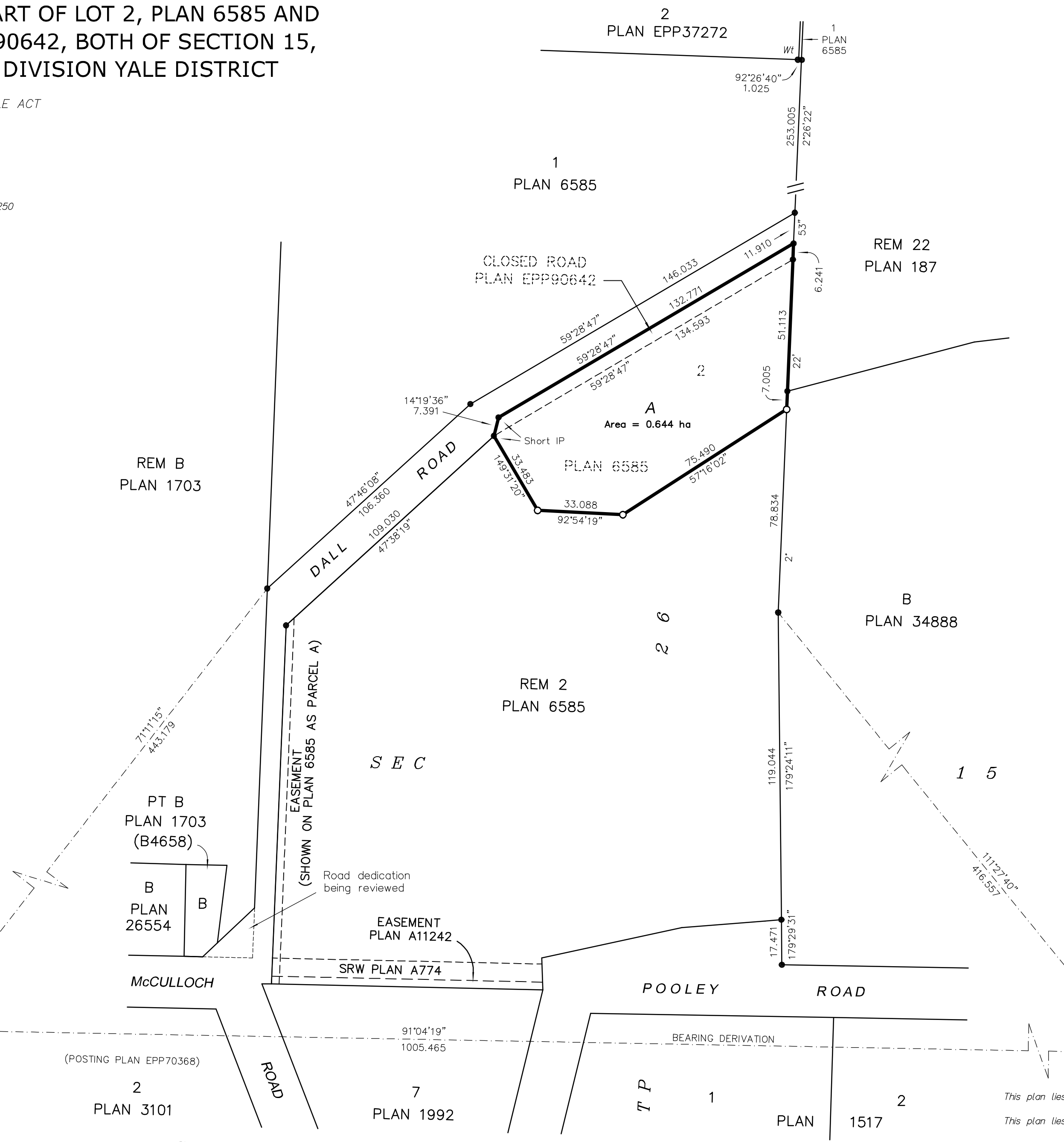
The UTM coordinates and estimated horizontal positional accuracy are derived from Real-time GNSS survey ties to geodetic control monuments 75H2439 and 02H2365 from Leica Smartnet station ID 4005.

This plan shows horizontal ground-level distances unless otherwise specified. To compute grid distances, multiply ground-level distances by the average combined factor of 0.9999027 which has been derived from geodetic control monuments 75H2439 and 02H2365, CGVD 28 (HTV2.0)

Note: The coordinates and horizontal positional accuracies shown on this plan are a result of an independent and accurate GNSS survey and do not represent official published coordinates.

GCM 75H2439  
 UTM Zone 11 coordinates  
 Datum: NAD83(CSRS) 4.0.0.BC.1  
 UTM northing: 5525870.137  
 UTM easting: 325790.330  
 Point combined factor: 0.9999088  
 Estimated Horizontal Positional Accuracy: 0.03m.

GCM 02H2365  
 UTM Zone 11 coordinates  
 Datum: NAD83(CSRS) 4.0.0.BC.1  
 UTM northing: 5525851.327  
 UTM easting: 326795.520  
 Point combined factor: 0.9998966  
 Estimated Horizontal Positional Accuracy: 0.03m.



This plan lies within the Regional District of Central Okanagan.

This plan lies within the Agricultural Land Reserve.

This plan lies within the jurisdiction of the Approving Officer for the City of Kelowna.

The field survey represented by this plan was completed on the 19th day of February, 2019.

Robert T. Macdonald, BCLS 873

**RUNNALLS DENBY**  
 british columbia land surveyors  
 259A Lawrence Avenue Kelowna, B.C. V1Y 6L2  
 Phone: (250)763-7322 Fax: (250)763-4413  
 Email: rob@runnallsdenby.com

DWG. No.: 14978 SUBDIVISION FILE: 14978